



FUELCLOUD



CLOUDLINK
Quick Start Guide



Welcome to FuelCloud!

This quick start guide will help you get your FuelCloud system installed.



Important:

Online setup must be complete in order to finish installation and test your system. If you are the account owner, please complete online setup prior to your installation date. Go to [Fuelcloud.com](https://fuelcloud.com) and follow the on-screen prompts.

Need Help? Videos and more information available at help.fuelcloud.com.

1 Confirm online account has been setup

Create an Account at FuelCloud.com

The Setup Page will walk you through the all of the necessary steps and features to get your system going. A few of these steps are mandatory for installation, while others can be set up later. For install, here's what you need:


1. Add a Default Payment Method

 **Tip:** Go to Settings > Billing in the left navigation.


2. Add a Site

 **Important:** Ensure that the location address and coordinates for the site are correct.

3. Add a Tank

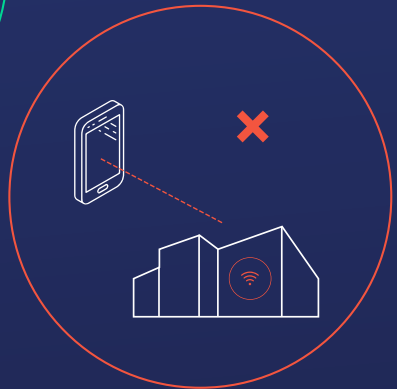
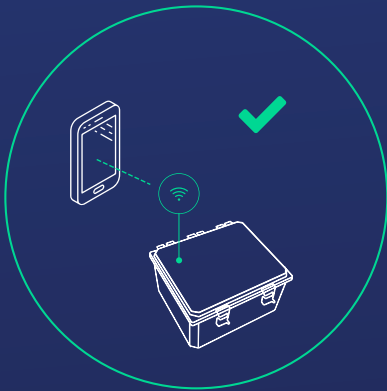
 **Tip:** For installation and testing purposes, just make sure you've added a tank to your installation site – all other details can be edited at anytime.

4. Add Hardware and Configure Relay

 **Important:** To test the app, your CloudBox must be activated and relays on the CloudLink must be configured to your tank.

2 Identify your installation location

FuelCloud uses a wireless signal to communicate with the hardware, and your mobile device needs a line of site to the CloudBox to connect and unlock the pump. Select an installation site that is in visual range, and do not install the CloudBox inside or behind a metal / cement barricade.



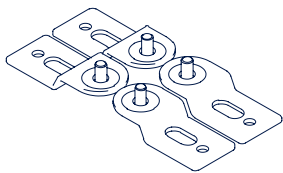
3 Turn power off

Turn off all power to the pump at the breaker.



4 Mount

Attach the 4 included Mounting Brackets and screws to the CloudLink. Use any available fasteners to mount the CloudLink.



*Included with
CloudLink (4x)*

5 Wiring

FuelCloud piggybacks AC power off of the input 1. Your wiring configuration will depend on whether the pump runs on AC or DC power.



Important: Before connecting any wires move the AC/DC switch to the configuration that matches the appropriate power source.

AC:

AC input power has a 80-240VAC power range. For power input, attach the appropriate wires (L, N, G) to the designated terminals on the top bank of terminals on the CloudLink circuit board. For each additional pump connect input power on channels 2 through 5.

For power output, attach the appropriate wires to the designated terminal on the bottom bank of terminals on the CloudLink circuit board.

Note: There must be AC or DC input power on channel 1 for the CloudLink to work.

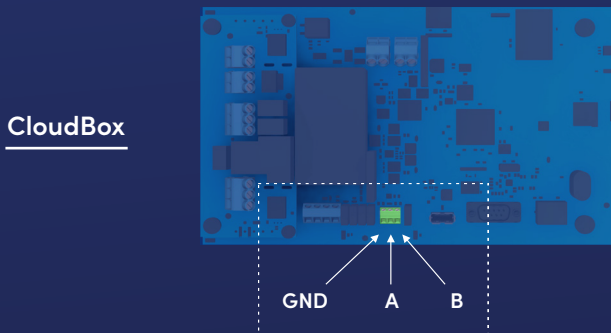
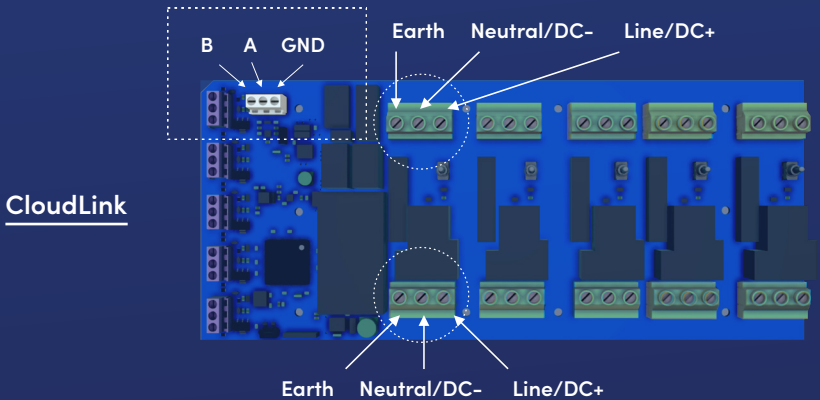
DC:

DC power has a 8-14VDC power range. For power input, attach the appropriate wires (DC+ & DC-) to the designated terminals on the top bank of terminals on the CloudLink circuit board. For power output, attach the appropriate wires to the designated terminals on the bottom bank of terminals on the left-hand side of the CloudBox circuit board.

Note: A Class 2 power source is needed to power the DC portion of the hardware.

RS-485

The CloudLink and CloudBox must be connected together through RS-485 in order to communicate. Both hardware units have 3 wiring terminals that must be connected to each other. A, B, and GND on the CloudLink need to be connected to A, B, and GND on the CloudBox.



6 Pulsers



Warning: Do not attach AC power to the terminal marked "12V+". This terminal is for DC active pulsers only. Attaching AC power to this terminal will destroy your FuelCloud board.

The wiring configuration for pulsers depends on whether you are using a 2-wire (passive) or a 3-wire (active) pulser. All pulser wiring should be connected to the bank of terminals on the left on the bottom of the FuelCloud board, as demonstrated in the graphic on the right.

2-Wire (Passive) Pulser:

Note: for 2 wire pulsers, it doesn't matter which of the two wires you attach to each terminal.

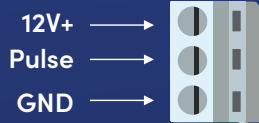
- Attach one wire to the terminal marked 'ENC INP'.
- Attach one wire to the terminal marked 'GND'.

3-Wire (Active) Pulser:

Note: 3 wire pulser if pulser requires 12V DC power.

- Attach the pulser 12V power wire to the '12V+' terminal.
- Attach signal wire to the 'ENC INP'.
- Attach the ground wire to the GND terminal.

Connect the corresponding pulser to the matching channel as the pump:



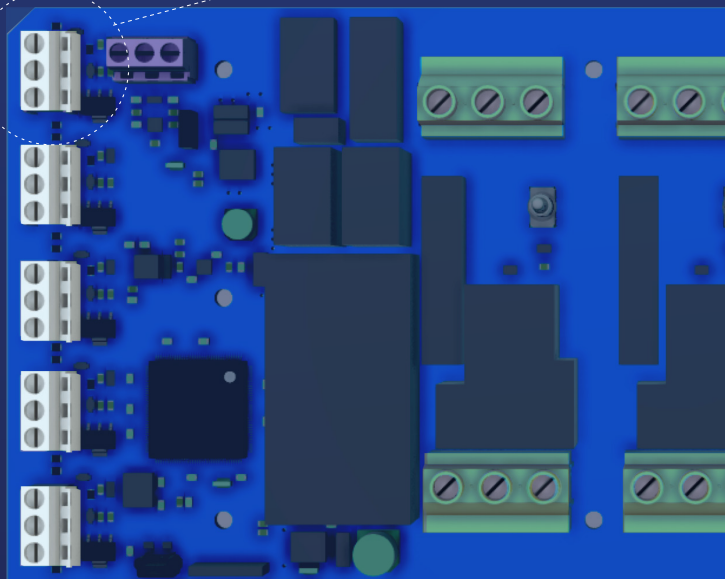
1

2

3

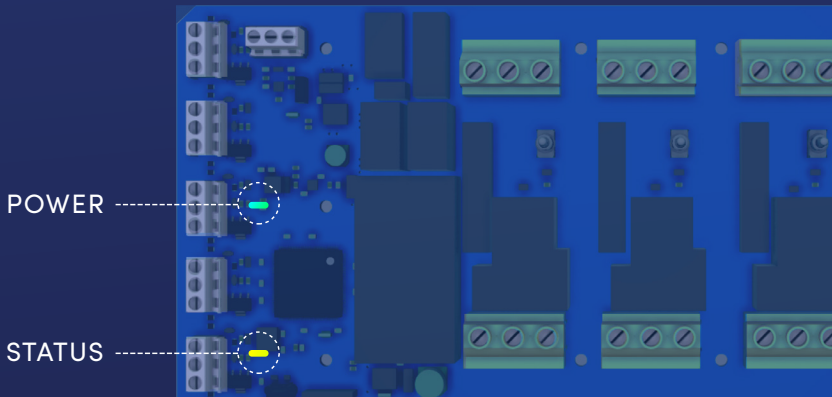
4

5



7 Power On

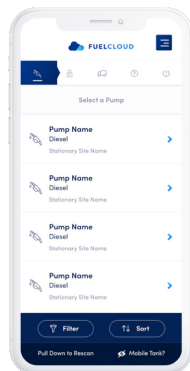
- Turn the power back on at the breaker.
- Verify that the board lights up - a green LED on the left side of the circuit board labeled power should illuminate. Additionally a yellow ID will illuminate on the ID board.
- If no LEDs illuminate:
 - Verify that the terminals are correctly wired for your power supply.
 - Verify that the AC/DC switch is in the correct position.
 - Verify that there are no blown fuses.
 - Verify that there is power coming to the CloudLink.



8 Test

Open the FuelCloud mobile app and connect to your newly installed FuelCloud hardware.

Note: if you cannot connect to your FuelCloud hardware and the unit has powered up correctly, verify that you have completed online setup appropriately.



Toggle the bypass switch and verify that the pump can run in bypass mode. Check that the latest version of the FuelCloud app is installed.

